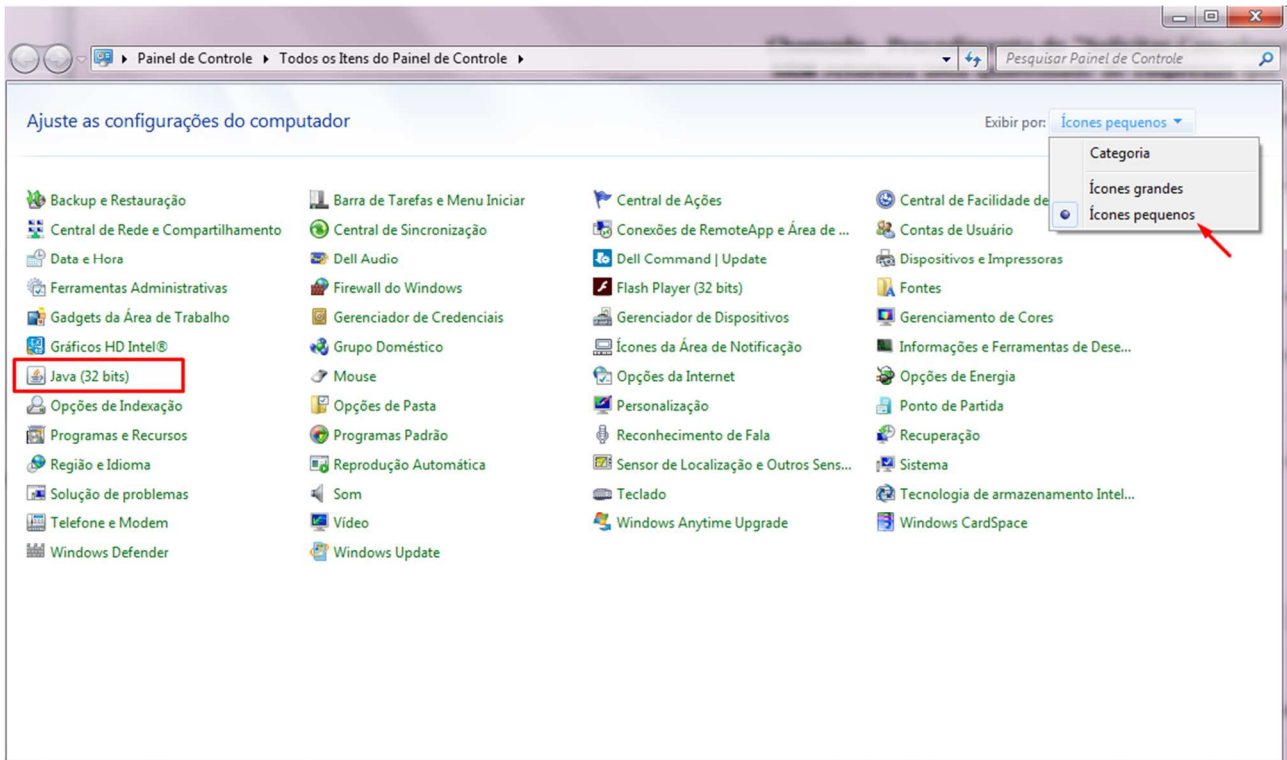
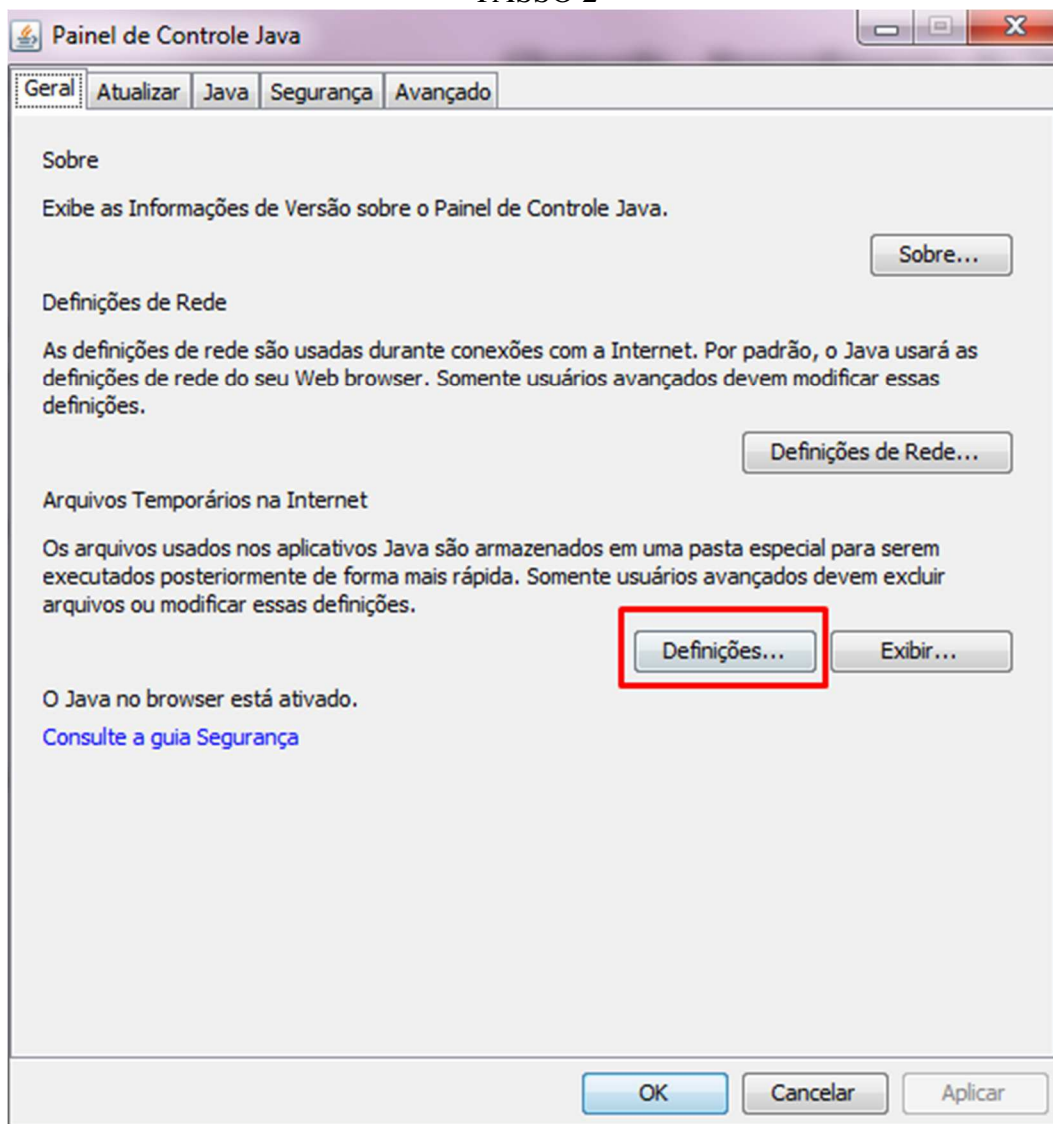


# Para extrair o log do assinador Java

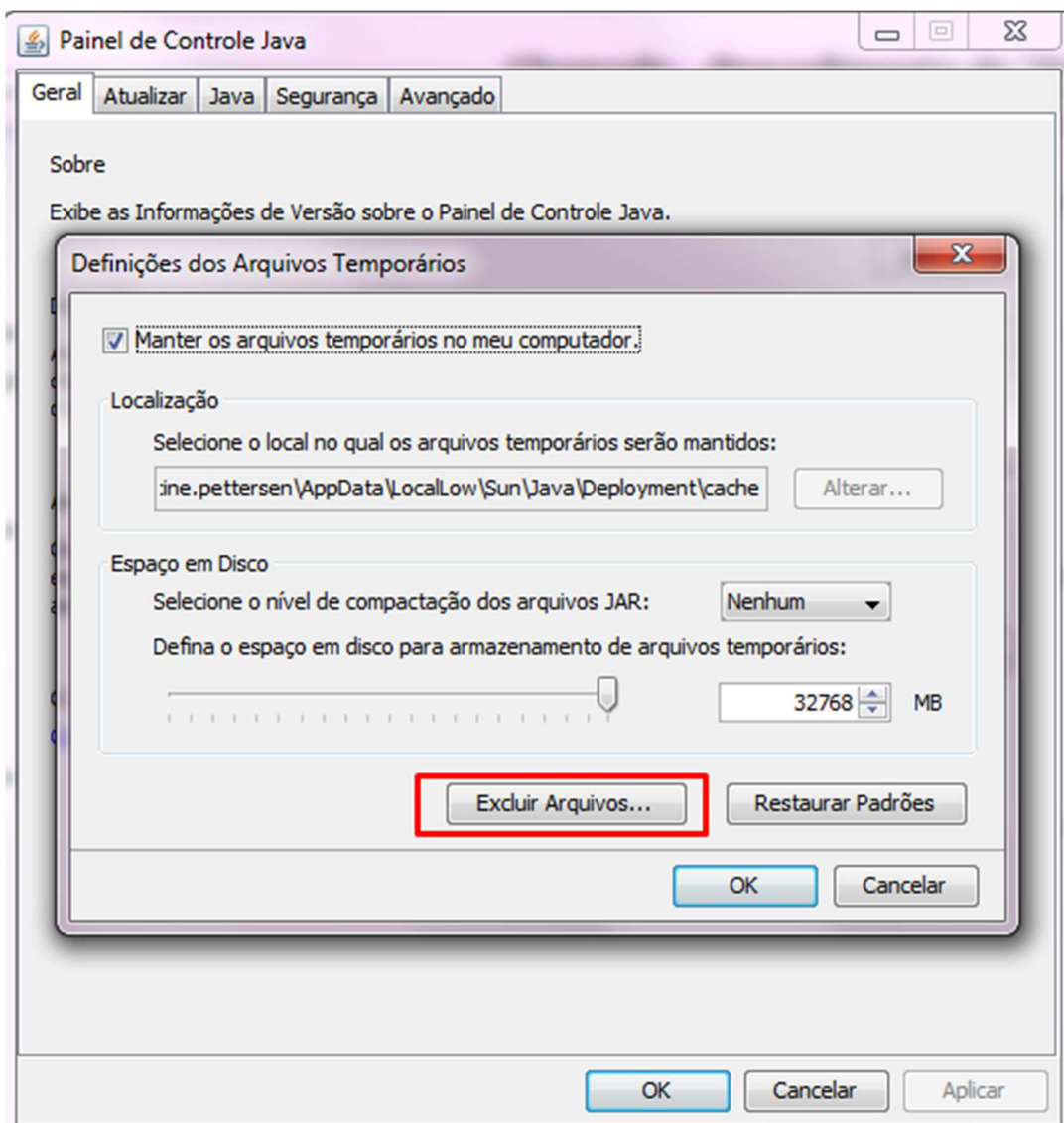
## PASSO 1

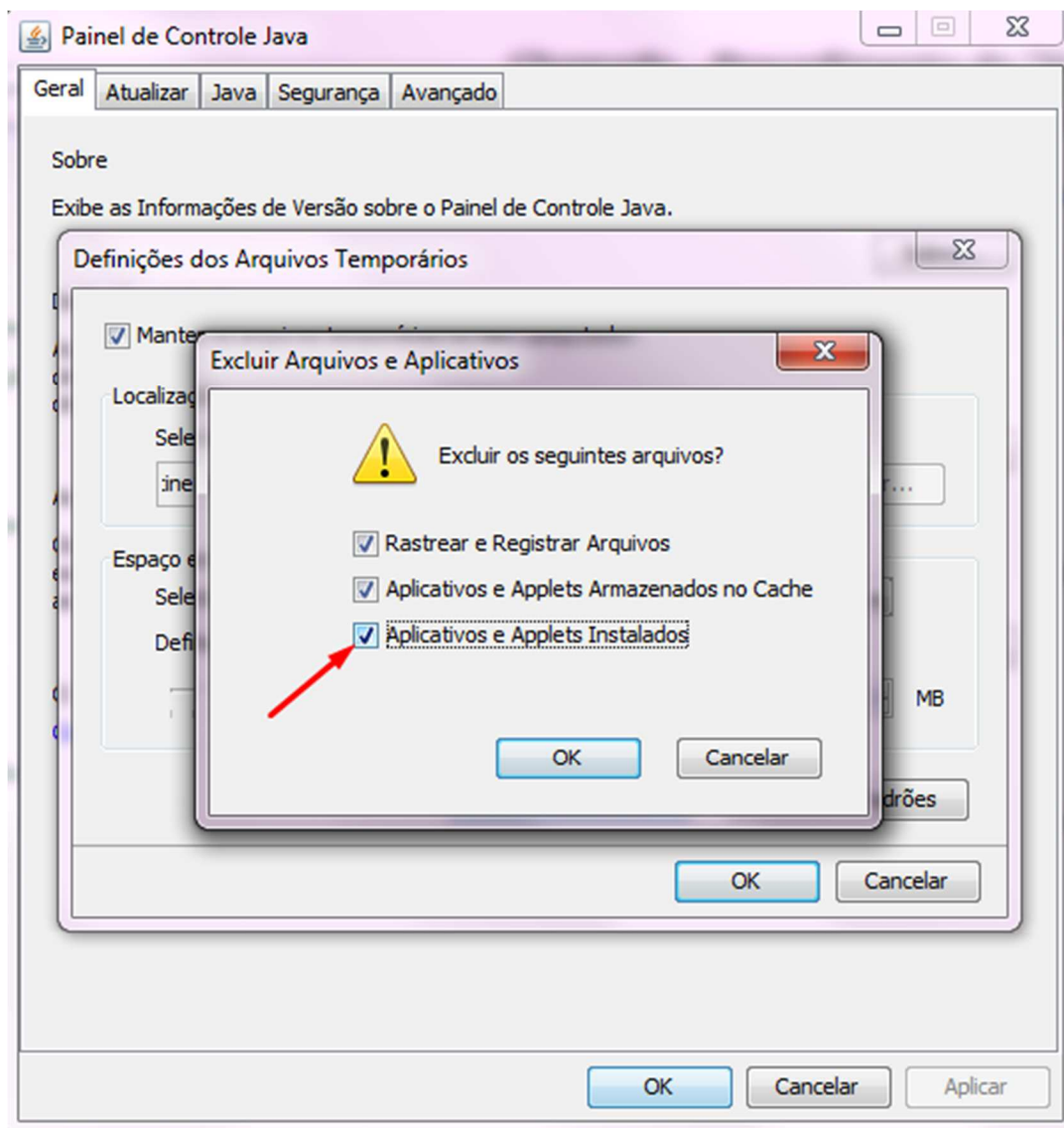


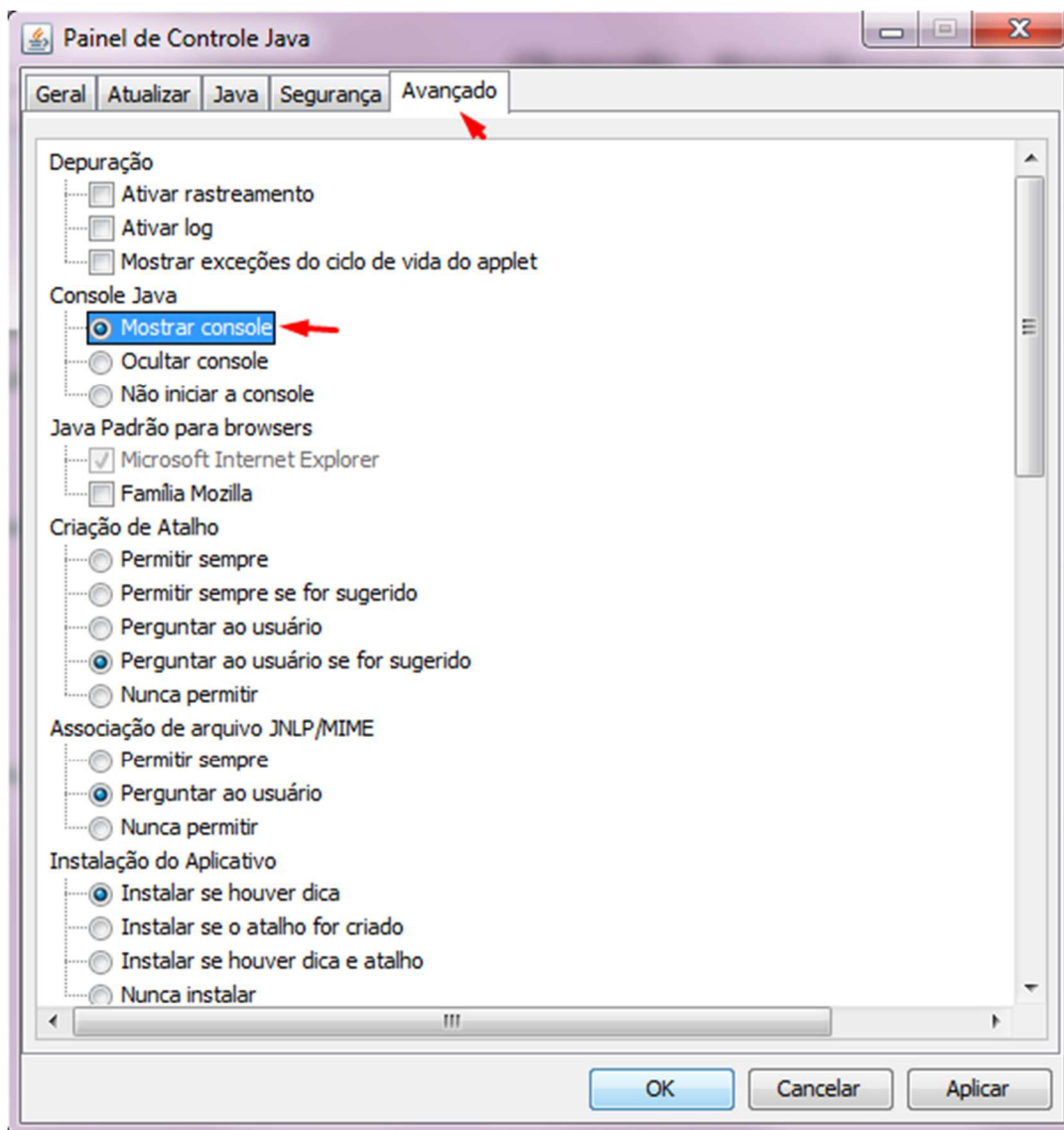
## PASSO 2

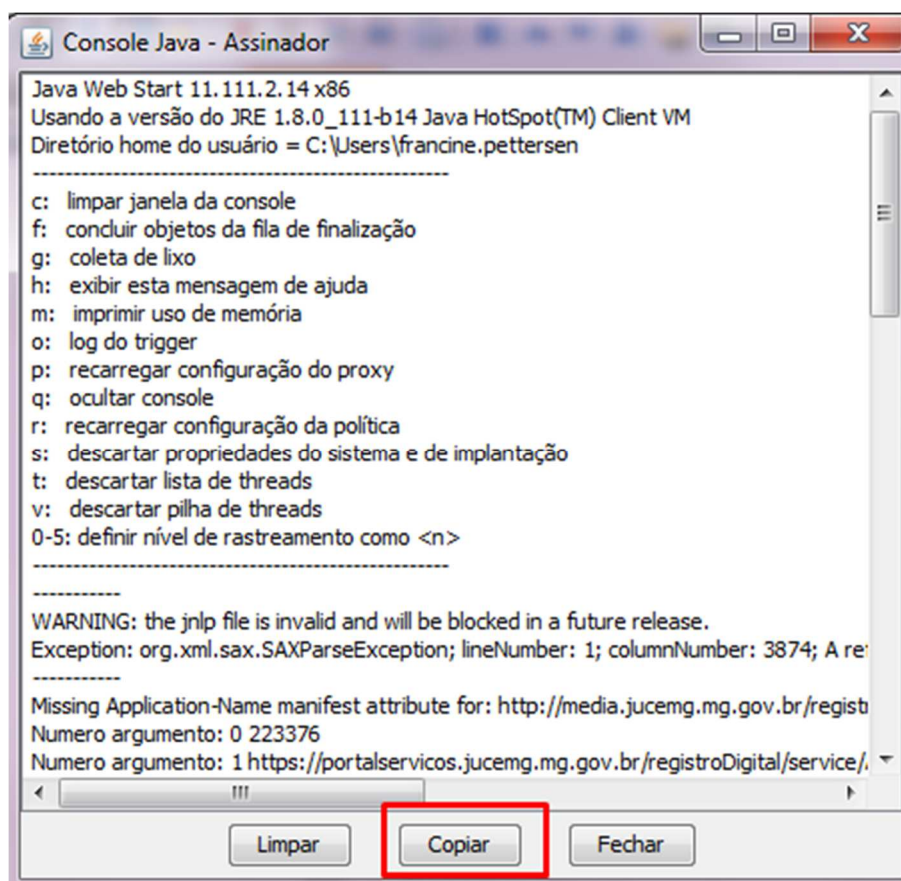


## PASSO 3









### Prováveis causas a verificar:

Verificar o bloqueio da máquina/rede ou do antivírus, link de internet, verificar se a versão do Java está atualizada e, posteriormente ao descartar estas possibilidades, enviar pelo GLPI o log do aplet, para verificação da equipe de desenvolvimento.